

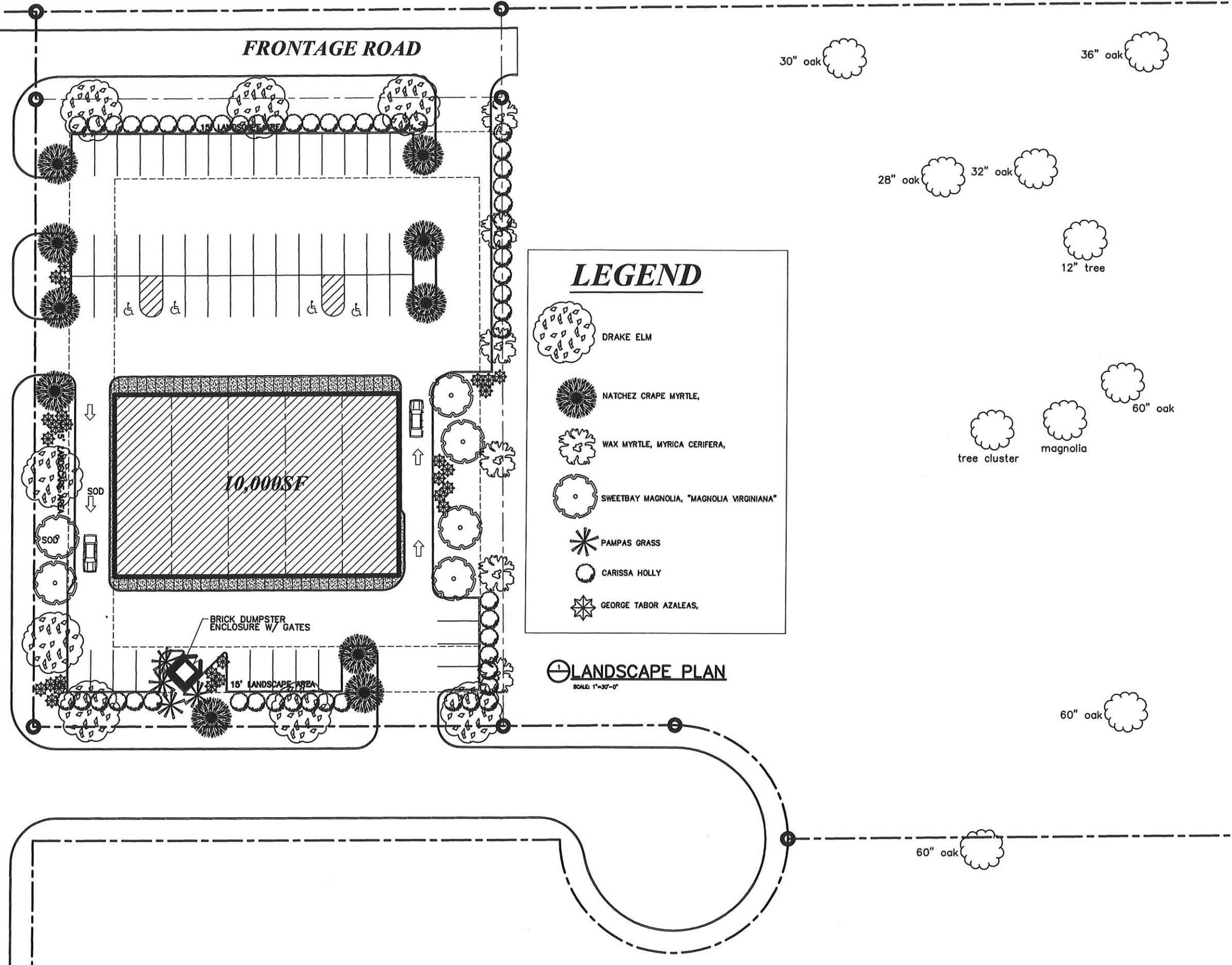











GLUCKSTADT ROAD RIGHT-A-WAY

DEES ROAD EXTENSION

FRONTAGE ROAD



**LEGEND**

-  DRAKE ELM
-  NATCHEZ GRAPE MYRTLE,
-  WAX MYRTLE, MYRICA CERIFERA,
-  SWEETBAY MAGNOLIA, "MAGNOLIA VIRGINIANA"
-  PAMPAS GRASS
-  CARISSA HOLLY
-  GEORGE TABOR AZALEAS,

LANDSCAPE PLAN  
SCALE: 1"=30'-0"

| REVISIONS | BY |
|-----------|----|
|           |    |
|           |    |
|           |    |
|           |    |
|           |    |
|           |    |
|           |    |



**GLUCKSTADT PARK PHASE ONE**  
102 DEES DRIVE  
GLUCKSTADT MS

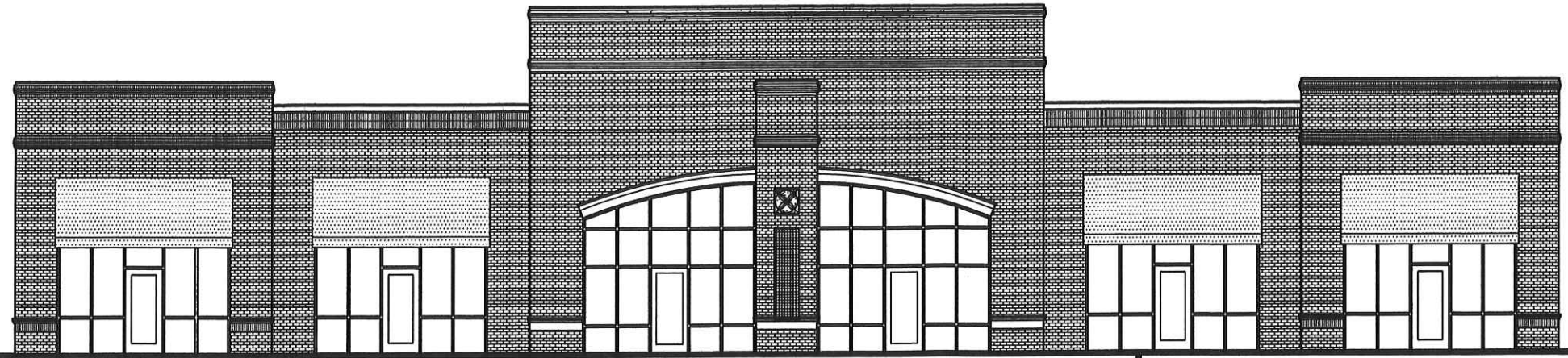
|                        |
|------------------------|
| DESIGN                 |
| CHECKED                |
| DATE<br>AUGUST 2, 2020 |
| SCALE                  |
| JOB NO.                |
| SHEET                  |
| <b>L1.0</b>            |
| SHEET                  |

| REVISIONS | BY |
|-----------|----|
|           |    |
|           |    |
|           |    |
|           |    |
|           |    |
|           |    |
|           |    |
|           |    |
|           |    |
|           |    |

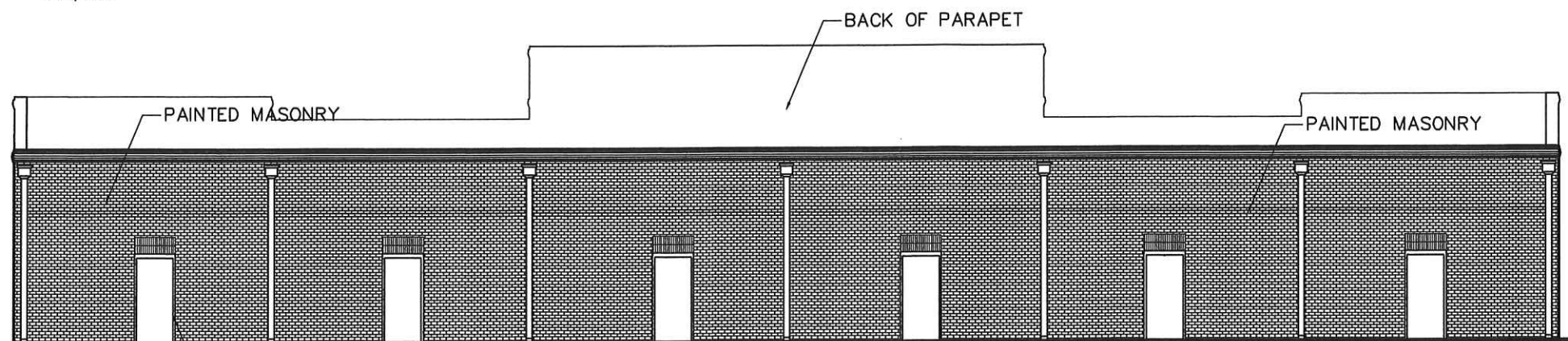


**GLUCKSTADT PARK PHASE ONE**  
 102 DEES DRIVE  
 GLUCKSTADT MS

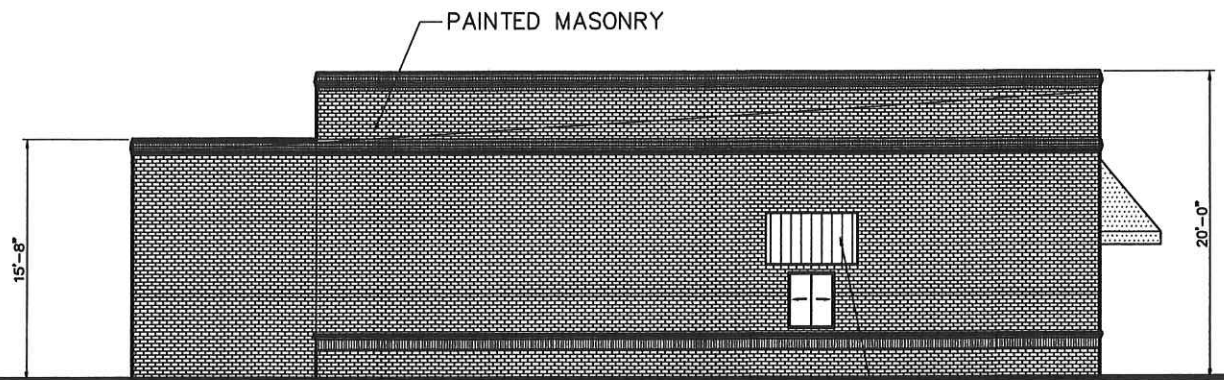
|                |
|----------------|
| DESIGN         |
| CHECKED        |
| DATE           |
| AUGUST 2, 2020 |
| SCALE          |
| JOB NO.        |
| SHEET          |
| <b>A3.0</b>    |



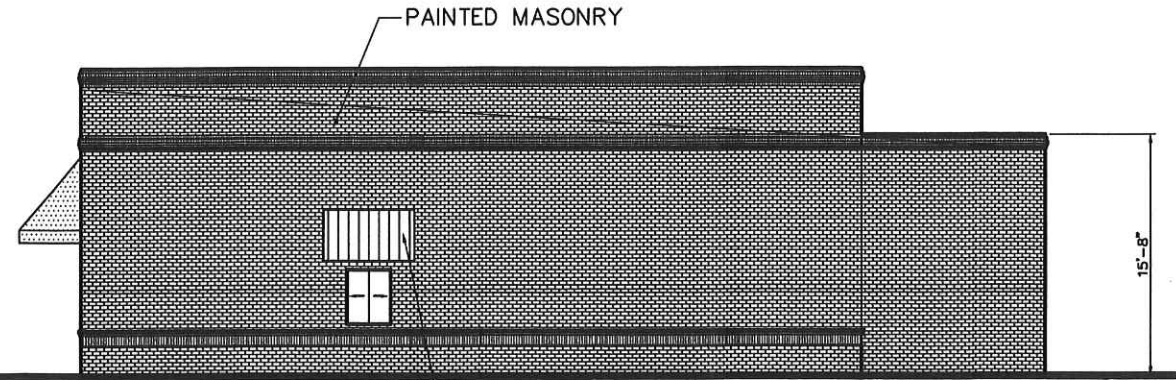
**⊕ NORTH ELEVATION**  
SCALE: 3/16"=1'-0"



**⊕ SOUTH ELEVATION**  
SCALE: 3/16"=1'-0"



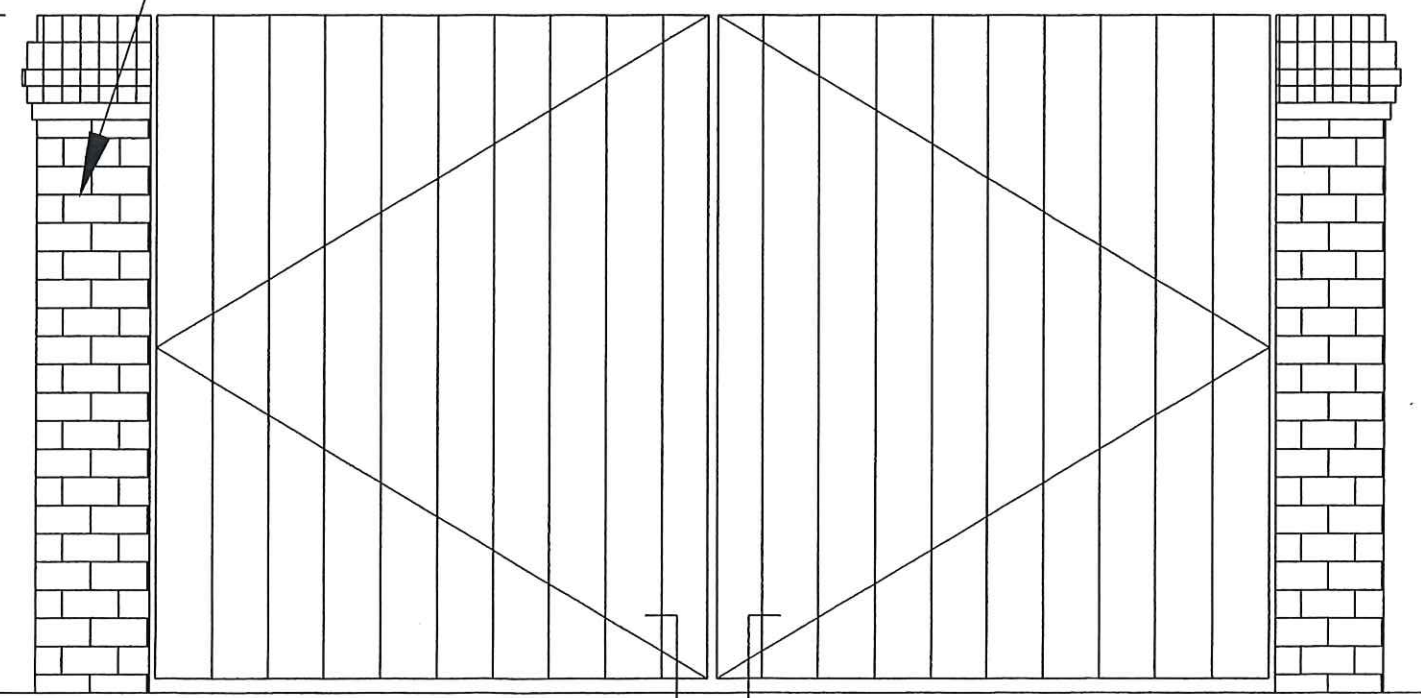
**⊕ EAST ELEVATION**  
SCALE: 3/16"=1'-0"



**⊕ WEST ELEVATION**  
SCALE: 3/16"=1'-0"

6'-0"

MATCH BUILDING  
BRICK, COLOR @  
DETAILS



HOME // PRODUCTS // CONTRACTOR SELECT TWR LED WALL PACK



SHARE

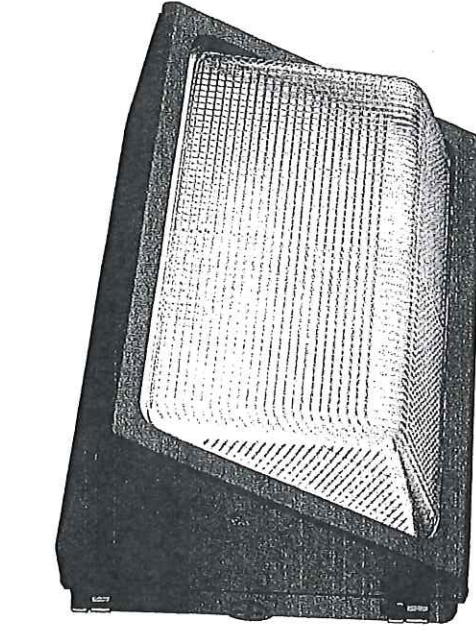
# Contractor Select TWR LED Wall Pack

## Most popular and readily available TWR configurations for your everyday lighting needs

by [Lithonia Lighting](#)



Cast in a traditional dayform, the TWR1/TWR2 LED luminaires offer a popular, classic appearance with energy-efficient LED technology. TWR LED wall packs are ideal for outdoor applications such as carpools, loading areas, driveways and parking areas. TWR1 is now also available with adjustable lumen output technology. With eight output settings, the TWR allows you to use a single wall pack when replacing 50W - 250W HID.



Compare

### Spec Sheets



#### DOCUMENT TITLE

DOWNLOAD  EMAIL

Contractor Select TWR LED.pdf

VIEW  DOWNLOAD  EMAIL

DOWNLOAD SELECTED

EMAIL SELECTED

### Photometry & BIM



### Specifications



|                                     |                   |                      |   |
|-------------------------------------|-------------------|----------------------|---|
| <b>Brand</b>                        | Lithonia Lighting | <b>Lumen Output</b>  | 1000 LM 2000 LM 3000 LM 4000 LM 5000 LM 6000 LM 8000 LM 9000 LM 10,000 LM |
| <b>Color</b>                        | Bronze            | <b>Mounting Type</b> | Surface   |
| <b>Correlated Color Temperature</b> | 4000 K 5000 K     |                      |   |

### BRANDS

### LIGHTING

- [Aculux](#)
- [American Electric Lighting](#)
- [Antique Street Lamps](#)
- [Gotham Lighting](#)
- [Healthcare Lighting](#)
- [Hydrel](#)
- [Indy](#)
- [Juno](#)
- [Lithonia Lighting](#)
- [Mark Architectural Lighting](#)
- [Peerless Lighting](#)

AVI (NYSE) \$124.64

[How to Buy](#) [Investors](#) [About Us](#) [Social](#) [Login](#)



Shop All Departments

Bathroom Kitchen Lighting Fans

Hardware

Appliances Decor Outdoor

HVAC

Flooring

Commercial Clearance

Build.com Credit Card

FREE Standard Ground Shipping on Orders over \$49

E-180-5-BZ

Item # bci2860656

# Progress Lighting PCPAE-180-5-BZ LED Parking Lot Light - 181W - IES Type 5 Distribution

Write

\$93

Finish

ZE



Bronze

\$939.93

148 In Stock

Leaves the Warehouse by Monday, June 24th



Select

Free Shipping!

Leaves the Warehouse by Monday, June 24th (Change Zip)

148 In Stock

- 1 +

Add to Cart

Add to Project

Compare



Buy Now, Take 12 Months to Pay On orders of \$1,000 or more  
With the Build.com Credit Card  
Apply Now

## Customers Also Viewed

|   |  |   |  |   |  |
|---|--|---|--|---|--|
| Progress Lighting PCPAE-180-3-BZ<br>(0)<br>Starting at \$969.00 | MaxLite AR-XAL450UT4-60<br>(0)<br>Starting at \$1,057.35 | Lumark NFFLD-L-C75-T<br>(0)<br>Starting at \$1,200.77 | MaxLite AR-XAL450UT3-50<br>(0)<br>Starting at \$1,057.35 | Lumark NFFLD-L-C75-S<br>(0)<br>Starting at \$1,200.77 | MaxLite AR-XAL450UT5-50<br>(0)<br>Starting at \$1,057.35 |
|---|--|---|--|---|--|

Overview

Reviews

Product Q&A 1

## Product Overview

Features:

- TGIC thermoset polyester powder paint
- Die-cast and extruded aluminum with vertical finning for maximum thermal management. Electrical and optical components are separated to provide increased thermal management. EPA = 0.74 ft<sup>2</sup>
- Specially designed acrylic LED lenses for IES Type 5 distribution. Lens optics are rotatable and interchangeable in field. LEDs are 4000K/70 CRI and optical assembly in IP65 rated. Fixture allows zero uplight.
- UL rated for wet locations
- Highly efficient LEDs produce little heat and have an extremely long lifespan
- Made of aluminum
- 5 year limited warranty
- -40°F to 104°F operating temperature
- Certifications: UL-1598, C22-2, C250.0-24, ANSI 3G

Dimensions:

- Height: 6"
- Length: 26 3/5"
- Width: 11 2/3"